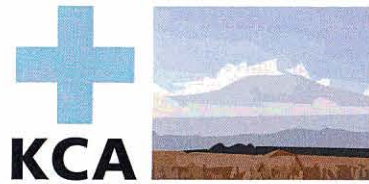


*"You never give so much as when you give hope"*



**KCA**

Kili Clinicians Association

Fes el teu donatiu al número de compte, **Haz tu donativo en el número de cuenta**, Make your donation to the account number

ES22 0182 8110 4202 0243 9114

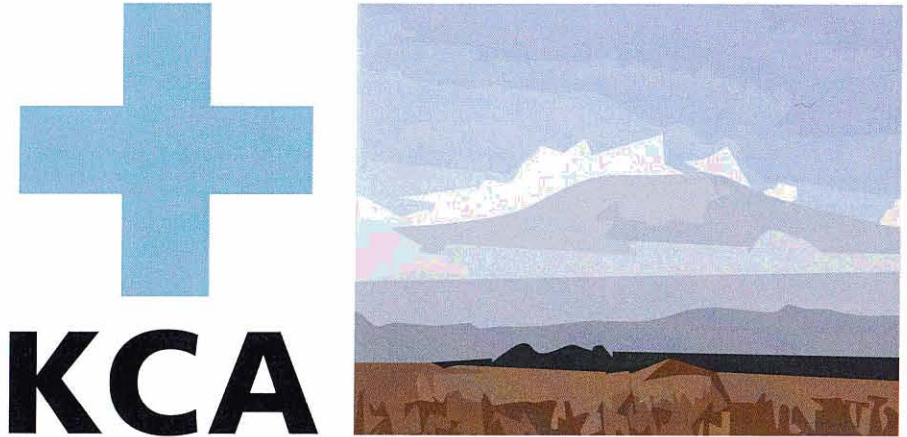
I am contributing to a new operating theatre at the **MOUNT MERU HOSPITAL**  
**ARUSHA - TANZANIA - EAST AFRICA**

---

**KCA - Kili Clinicians Association**  
email: [kiliclinicians@gmail.com](mailto:kiliclinicians@gmail.com)

2019

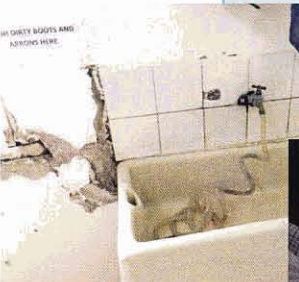
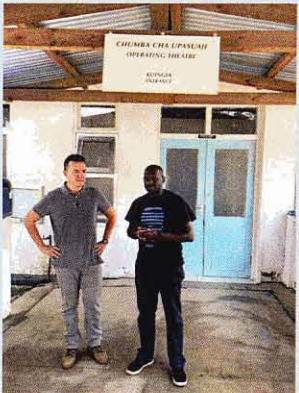
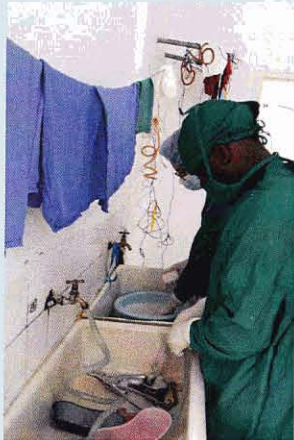
*"You never give so much as when you give hope"*



**KCA**

**Kili Clinicians Association**

©2019 KCA - Kili Clinicians Association



Kili Clinicians és una associació de professionals de la salut que té com objectiu oferir suport assistencial, docent i investigador al nord de Tanzània.

Des de 2009 estem vinculats amb la Kilimanjaro Christian Medical Unversity College i el Kilimanjaro Christian Medical Center - Moshi.

Estem recollint fons per a construir un nou quiròfan al Departament de Cirurgia Ortopèdica i Traumatologia del Mount Meru Hospital - Arusha.

Gràcies per la vostra col·laboració,

Kili Clinicians Association

Kili Clinicians es una asociación de profesionales de la salud que tiene como objetivo ofrecer soporte asistencial, docente e investigador en el norte de Tanzania.

Desde 2009 estamos vinculados con la Kilimanjaro Christian Medical Unversity College y el Kilimanjaro Christian Medical Centre - Moshi.

Estamos recogiendo fondos para construir un nuevo quirófano en el Departamento de Cirugía Ortopédica y Traumatología del Mount Meru Hospital - Arusha.

Gracias por vuestra colaboración,

Kili Clinicians Association

Kili Clinicians is an association of health professionals supporting clinical practice, teaching, and research activities in northern of Tanzania.

Since 2009 we have been affiliated with Kilimanjaro Christian Medical Unversity College and Kilimanjaro Christian Medical Centre - Moshi.

We are now fundraising to construct a new operating theatre for Othopedic Surgery and Traumatology Department at the Mount Meru Hospital in Arusha.

Thankyou for your contribution,

Kili Clinicians Association